

OFFSHORE LEBANON

Gravity, magnetic and bathymetry data

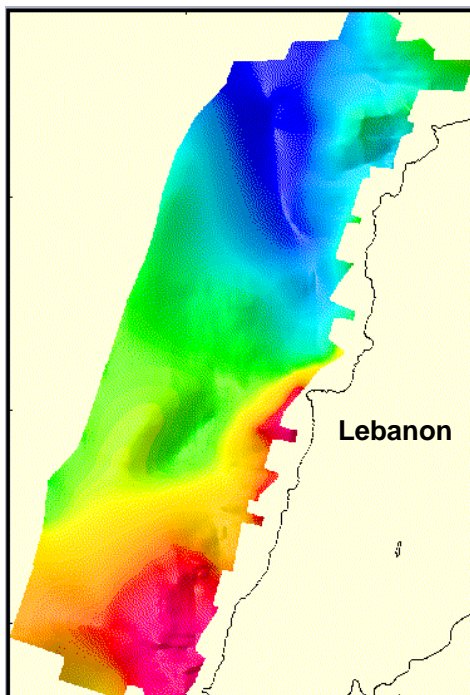


Project Description

FUGRO-LCT has recently completed the acquisition of marine gravity and magnetic data over the shallow water area offshore Lebanon. These data have been acquired in conjunction with a 2D seismic survey, LEB02, conducted by Fugro Multi Client Services and Spectrum Information and Energy Technology.

This is the first survey over the shallow water area and so the gravity and magnetic data will be invaluable in the interpretation. In conjunction with the seismic data they will help to define the main tectonic trends and with 2D and 3D modelling define the extent of the basins, basement topography and sediment thickness.

Because of the need for data integration to fully assess the potential of this new area, the seismic, gravity and magnetic data is offered as a complete package.



Bouguer Gravity

Gravity and magnetic data deliverables

The project deliverables for each data license include:

- Digital line and grid data in ASCII format on 8mm tape or CD.
- Colour shaded relief maps of free-air gravity, Bouguer gravity, residual Bouguer gravity, magnetic anomaly, residual magnetic anomaly and bathymetry.
- Processing report

Data Delivery Schedule

Data will be available 4Q02.

For costs or other information regarding this data package or advice and quotations for additional services, including merging of datasets, 2D and 3D modelling, please contact Fugro-LCT at either of the addresses below.

FUGRO-LCT INC.

Attn: Brian Anderson
6100 Hillcroft, 5th Floor (77081)
P.O. Box 740010
Houston, TX 77274
Tel: (713) 369-6100 • Fax: (713) 369-6110
E-mail: information@lct.com

FUGRO-LCT LTD.

Attn: Stewart Walter
5 Newmarket Court
Kingston, Milton Keynes, MK10 0AG
U.K.
Tel: +44-(0)1908-286100 • Fax: +44(0)1908-286101
E-mail: info@fugro-lct.co.uk

Website: www.fugro-lct.com